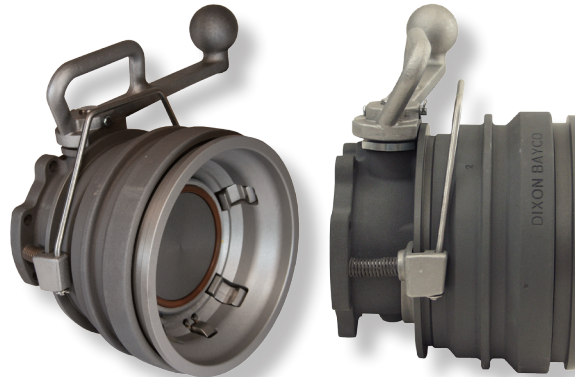




5300 / 5400 Series API Coupler

API coupler uses an improved snap-on connection, the coupling action is automatic upon contact with the API adapter.

EXCLUSIVE
5 YEAR
MECHANICAL
WARRANTY *



5300 Series

Application:

- When combined with API adapters, these couplers are suitable for rail car and tank truck loading or unloading

Materials:

- Body: hard coated anodized 356T6 aluminum
- Shroud: hard coated anodized 356T6 aluminum with stainless steel insert
- Link, shaft, pin and crank: hardened 17-4PH stainless steel
- Cam: CF8M stainless steel
- Poppet and bearing: Bayloy
- Seals: Buna, FKM-B, FKM-GFLT

Features:

- Locking 5 cam design provides easy alignment and tight connection
- Modular design allows various face seal combinations to be compatible with different alternative fuels, performance levels and applications
- Shaft seals can be changed without removing coupler from loading arm
- Fully interlocked collar cannot be opened when connected and cannot be disconnected when opened
- Choice of a bonded nose seal, or a replaceable nose seal which allows quick seal replacement
- 4" TTMA inlet mounting flange connection
- Maximum flow rate: 600 GPM
- Ball-end handle for easy, comfortable operation
- No special tools needed for maintenance
- Chemical compatibility (FKM-B seals):
 - gasoline
 - diesel
 - jet fuel
 - avgas
 - 100% ethanol
 - 100% methanol
 - 100% biodiesel
 - any blend of the above fluids
 - crude oil
- Chemical compatibility (Buna seals):
 - gasoline
 - diesel
 - avgas
 - 100% ethanol
 - 100% methanol
 - B2 to B20 biodiesel blends

Specifications:

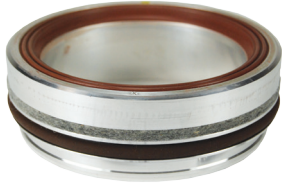
- Operating temperature:
 - FKM-B: -10°F to 400°F (-23°C to 204°C), FKM-GFLT: -20°F to 400°F (-28°C to 204°C),
 - Buna seals: -20°F to 250°F (-28°C to 121°C)
- Pressure drop: 3 to 4 PSI

Standard:

- Fully compliant with API RP1004:2003 specifications

* Normal wear and tear items (including seals) not covered

API Fittings - 5300 / 5400 Series



bonded nose seal
offers long life and cannot be washed out



replaceable nose seal
replaceable without removal from the loading arm

Size	Seal Material	Bonded Nose Seal Part #	Maximum Working Pressure	Replaceable Nose Seal Part #	Maximum Working Pressure
4"	Buna	5300	150	5400	75
	FKM-B	5300B	150	5400B	75
	FKM-GFLT	5300G	100	5400G	75
	FKM-B	5300BC ¹	150	---	--

¹ designed for high sulfur crude oil service

• Reference the Dixon Bayco Petroleum and Overfill catalog for bill of materials and complete list of repair kits.

Repair Kits



5354K1



5354K9



5354K13

Description	Part #
Buna shaft seal kit (for 5300 and 5400)	5354K1
FKM-B shaft seal kit (for 5300B and 5400B)	5354K3
Bonded buna nose seal (for 5300)	5354K7
Bonded FKM-B nose seal (for 5300B)	5354K9
Buna replaceable nose seal kit (for 5400)	5354K13
FKM-B replaceable nose seal kit (5400B)	5354K15

Dixon Bayco

800 High Street • Chestertown, MD 21620
phone: 410.778.2000 • fax: 410.778.4702
dixonvalve.com

Dixon Group Canada Limited

2315 Bowman Street • Innisfil, Ontario L9S 3V6
phone: 800.355.1991 • fax: 877.436.6251
canada.dixonvalve.com

